

# KEPA BUSH RESERVE

---

# INTEGRATED PLAN

Adopted by Ōrākei Local Board . September 2018



---

## CONTENTS

1.0	Introduction	5
2.0	Statutory context	6
3.0	Recent site history	7
4.0	Existing site photographs	9
5.0	Review of related plans and projects	10
6.0	Site analysis	12
7.0	Consultation summary	17
8.0	Development recommendations	18
9.0	Action plan	20
10.0	References	21

### APPENDICES

A. Te Aranga Design Principles

B. Planting List

C. Kepa Bush Integrated Plan Priority Sites



# 1.0 Introduction



## 1.1 The site

Kepa Bush Reserve is situated on the south-facing slope between Kepa Road and Pourewa Creek in Ōrākei, 6km south-east of the city. The reserve is located within the Tamaki Ecological District. It covers 14 hectares and was established in 1962 when Auckland City Council purchased it from St Johns Theological College. Kepa Bush Reserve described as Lot 1 DP 49361, is currently held in fee simple by the Auckland Council as an unclassified reserve and subject to the provisions of the Reserves Act 1977.

With the exception of the Hillsborough-Blockhouse Bay coastal strip, the Kepa Bush Reserve is the largest piece of native bush on the Auckland isthmus (Gardner 2009), and one of the last remaining areas of urban forest in the city. The reserve is largely covered by mature remnant coastal forest and forms an important part of a green belt stretching from Ōrākei to Glen Innes.

Access to the reserve is from 9 Colenso Place, between 251 and 255 Kepa Road and from 35 Thatcher Street.

## 1.2 Project scope

Given the high ecological significance of Kepa Bush Reserve, the intent of this plan is to improve the ecological functioning of the reserve, through increasing connectivity to other areas of ecological value within the wider landscape.

This plan will be developed in collaboration with Ngāti Whātua Ōrākei (NWO), the community and stakeholder groups. It aims to:

- articulate the vision for the reserve
- outline the reserve's ecological context and significance
- align with existing and proposed developments, including:
  - Auckland Transport's 'Ōrākei Spine' cycleway
  - the Pourewa Valley management plan being developed by NWO

### LEGEND

<span style="color: red;">●</span> Site Location	Main Roads
<span style="color: magenta;">●</span> Community Facilities	Railway
<span style="color: yellow;">●</span> Schools	Wildlife movements (2012 The Auckland Plan: Auckland's Environment map)
<span style="color: blue;">●</span> Railway Station	Biodiversity corridors (2013 Auckland Council Ecological Prioritisation map)
Public Open Space	
Ngāti Whātua Ōrākei Land	

## 1.3 Location map



Aerial extracted from Auckland Council GIS . Not to scale

# 2.0 Statutory context



## Unitary Plan Zoning



The Auckland Unitary Plan - extracted from Auckland Council GIS

Kepa Bush Reserve described as Lot 1 DP 49361, is currently held in fee simple by the Auckland Council as an unclassified reserve and subject to the provisions of the Reserves Act 1977.

Kepa Bush has Conservation Zoning under the Unitary Plan. The ecological importance of this area of habitat is underlined by its status as a Significant Ecological Area (SEA) and a 'Tranche 2 Biodiversity Focus Area'. There are New Zealand Archaeological Association sites associated with Maori Occupation within the reserve.

Cycling is prohibited in Kepa Bush Reserve.

### LEGEND

#### PUBLIC OPEN SPACE

- Conservation Zone
- Informal Recreation Zone

#### RESIDENTIAL

- Mixed Housing Suburban Zone
- Mixed Housing Urban Zone
- Terrace Housing and Apartment Buildings Zone

#### BUSINESS

- Mixed Use Zone
- Local Centre Zone
- Special Purpose Zone

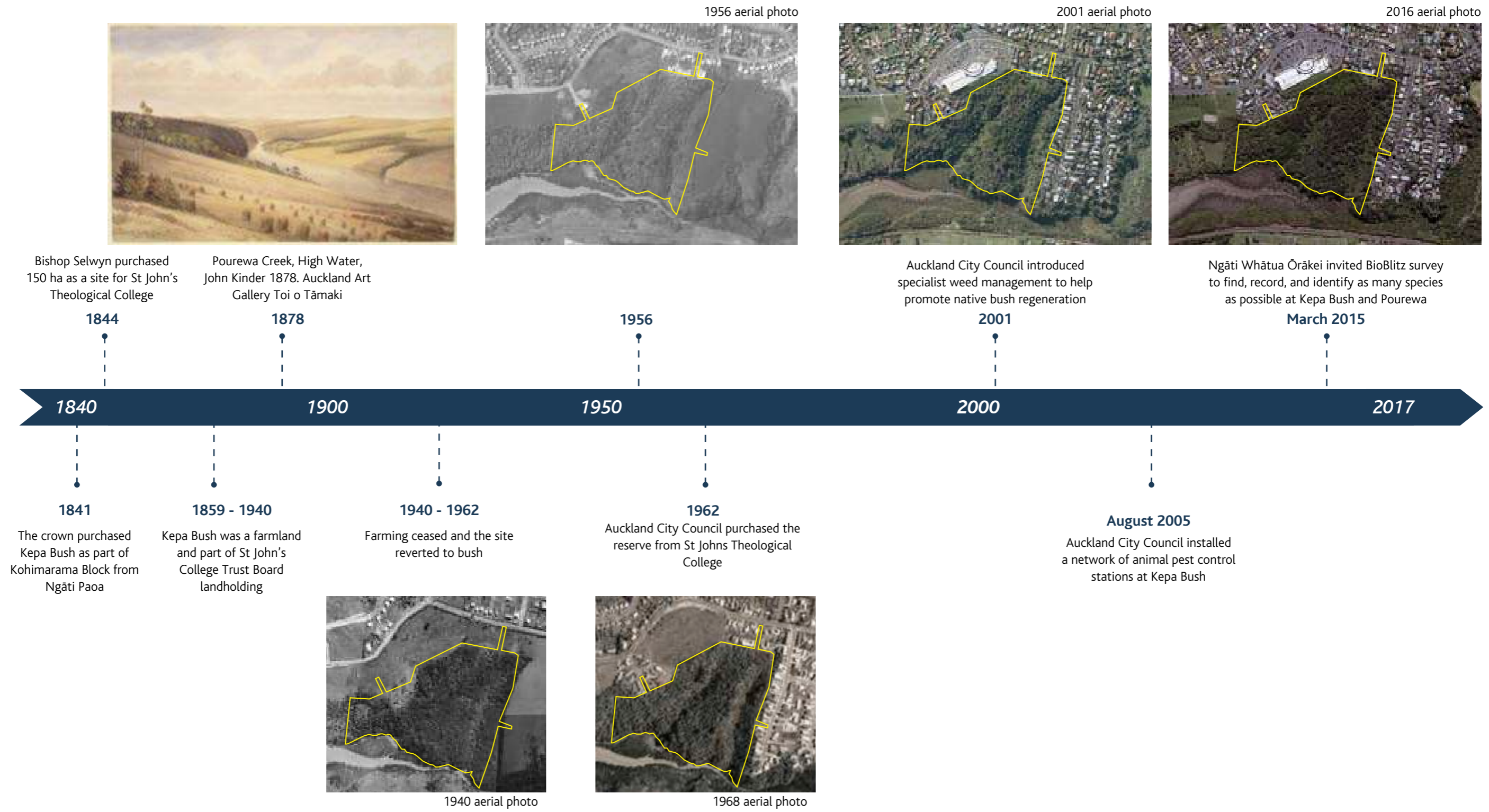
#### OVERLAYS

- Significant Ecological Area- Terrestrial
- Significant Ecological Area- Marine 1
- Significant Ecological Area- Marine 2
- Outstanding Nature Features

#### CULTURAL HERITAGE INVENTORY

- Recorded Archaeological Site

# 3.0 Recent site history





# 4.0 Existing site photographs



Park entrance from Kepa Road



Footpath from Kepa Road entrance leading into the reserve



Grassed / picnic area at Kepa Road entrance



Grassed / picnic area at Kepa Road entrance



Wayfinding signage



Mangrove lined Pourewa Creek at the reserves southern boundary



South-eastern reserve entry



View towards Purewa Cemetery from one of the lookout points



Gravel path



Boardwalk

# 5.0 Review of related plans and projects

## 5.1 Proposed Development Projects

The Pourewa Valley has two significant development projects in the planning stages, which will affect Kepa Bush Reserve:

- **'Ōrākei Spine' cycleway**  
Led by Auckland Transport, the Ōrākei Spine cycleway proposes a shared path running between Glen Innes and Ōrākei. When completed it will run all the way from Glen Innes, through the Pourewa Valley, around the Ōrākei Lagoon to Tamaki Drive. The project is due to be delivered in four sections. Section two runs along the southern side of Pourewa Creek.
- **Pourewa Valley masterplan** led by Ngāti Whātua Ōrākei Currently underway.

## 5.2 Community Projects

A number of community groups currently carry out weed and pest control and restoration planting within the reserve, including:

- Eastern Bays Songbird Project
- Friends of Kepa Bush
- Friends of Pourewa Valley

## 5.3 Planned Council Renewals Projects

- **Kepa Bush path renewals** - planned for 2017/2018 Maintenance, repairs and upgrades to parts of the track network to address areas that are a health and safety risk and to minimise damage to vegetation, or control erosion and run-off
- **Signage upgrades** - all signage to be upgraded 2017/2018, developed in conjunction with Ngāti Whātua Ōrākei and John La Roche, on behalf of Friends of Kepa Bush

Tracks and signage upgrades beginning soon.

## 5.4 Ecological Input

Consultants were commissioned to provide ecological input into the Kepa Bush Integrated Plan to increase the connectivity of Kepa Bush to other areas of high ecological value within the wider landscape. It provides recommendations for inclusion into the plan, including:

1. Mapping and descriptions of vegetation and habitats present.
2. Ecological values, vegetation and habitats.
3. Opportunities to enhance ecological functioning and connectivity of Kepa Bush.

Refer to appendices.

Kepa Bush Reserve in relation to 'Ōrākei Spine' cycleway and Ōrākei Greenways



### LEGEND

- Kepa Bush Reserve
- ↔ Proposed Auckland Transport 'Ōrākei Spine' cycleway
- ↔ Proposed Ōrākei greenways connection\*
- Proposed Ōrākei greenways connection\* (walking route only - cycling prohibited in reserve)
- Meadowbank Railway Station
- Proposed Selwyn Railway Station

\* Greenways routes are taken from the Ōrākei Greenways Plan (Adopted August 2016). These routes show an aspirational long term network. The final location of these paths is dependent on a range of factors including permission from landowner(s) and feasibility (contours, access, timing/staging, funding and related projects).

'Ōrākei Spine' cycleway map and visualisation

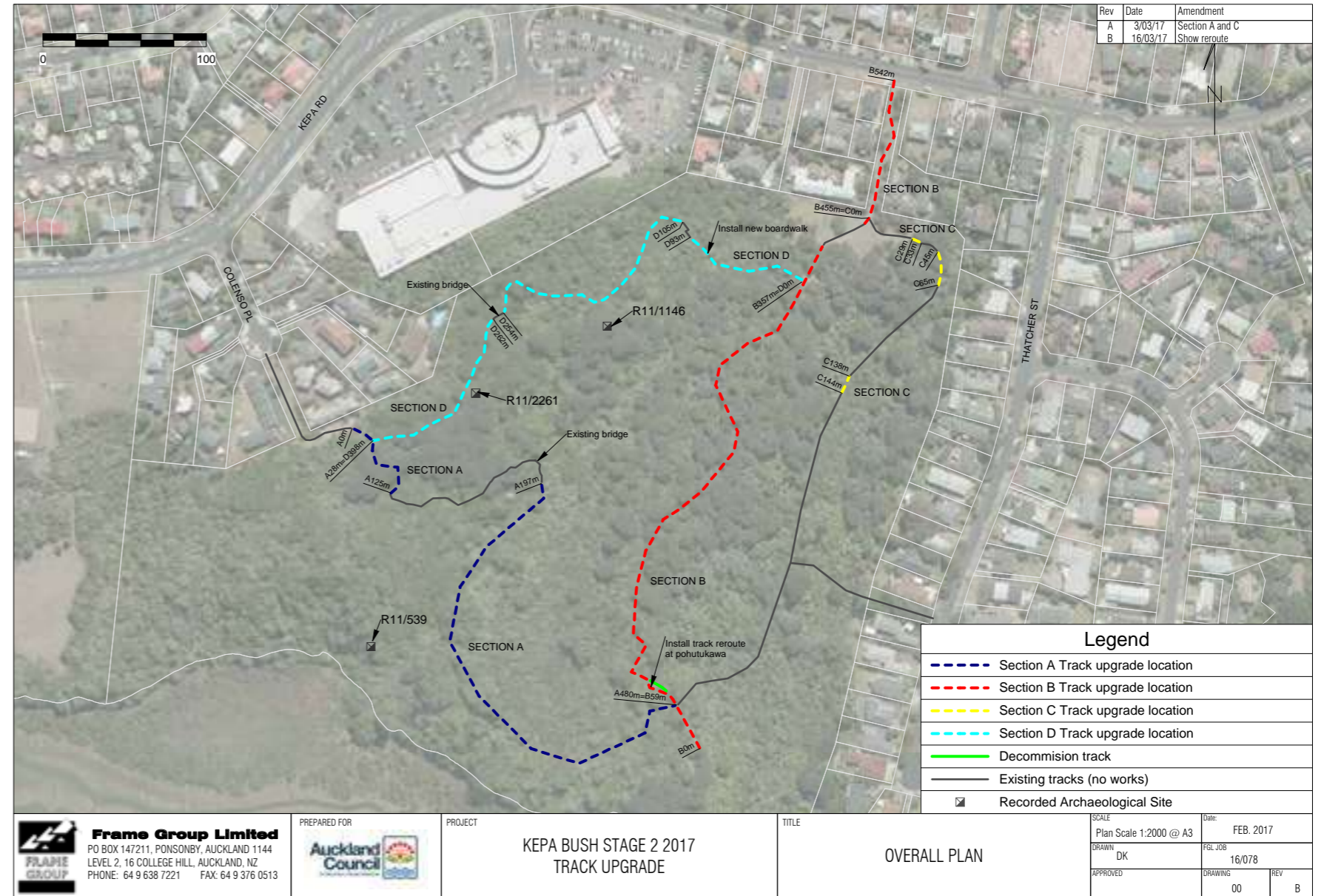


'Ōrākei Spine' cycleway section two: St Johns Road to Ōrākei Basin



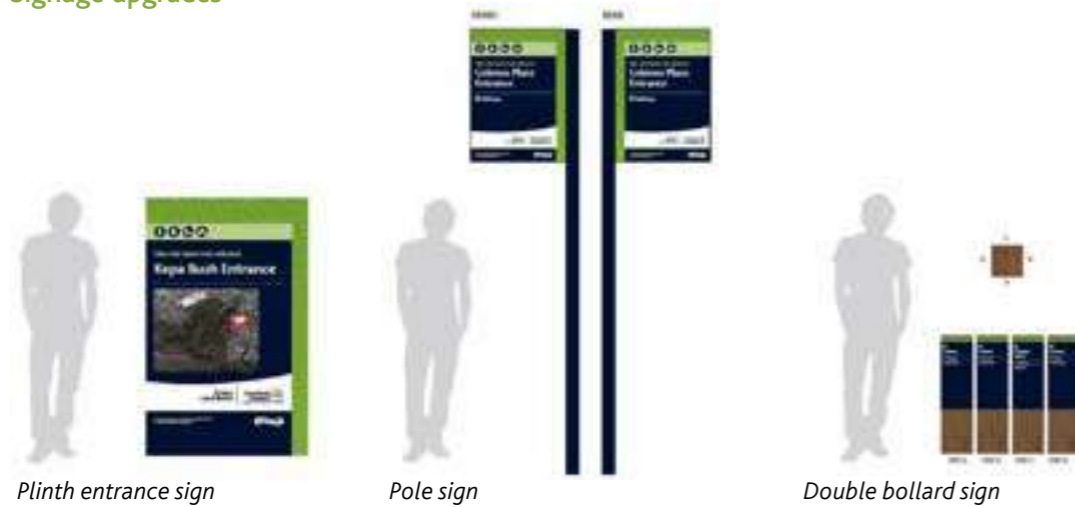
Auckland Transport visualisation of 'Ōrākei Spine' Cycleway rail crossing near Purewa Cemetery

Track upgrades plan



Auckland Council Kepa Bush Track upgrades overall plan

Signage upgrades



Plinth entrance sign

Pole sign

Double bollard sign

Interpretive signs

Signage icons



# 6.0 Site analysis



## 6.1 Existing park assets and circulation



- LEGEND
- Site boundary
  - Pathway
  - Boardwalk
  - Footbridge
  - Primary park entrance
  - Secondary park entrance
  - Platform
  - Existing signage
  - Existing park bench
  - Existing picnic table
  - Existing bin
  - Stream
  - Existing specimen trees
  - Existing indigenous forest
  - Existing lawn areas
  - Existing bus stop
  - Existing bus route

Existing park asset photographs



Cracked asphalt on entrance footpath



Exposed manhole on asphalt footpath creating a trip hazard



Exposed manhole on grassed area



Washed out gravel path and blocked drain



Boardwalk



Timber bench at lookout



Picnic table at grassed area off Kapa Road



Rubbish bin



Way finding signage within reserve



Boxed steps



Timber culvert



Deteriorated signage at park entrance



Bike barriers / no bike signage



## 6.2 Hydrology and Vegetation



### LEGEND

-  Site boundary
-  Existing paths/tracks
-  Existing boardwalks
-  Footbridge
-  Overland flow path
-  Flood prone area
-  Flood plains
-  Existing pōhutukawa, pūriri, broadleaved forest / coastal broadleaved forest (WF4)
-  Existing mangrove forest and scrub (SA1)
-  Existing exotic scrub (ES)
-  Platform

The reserve is almost completely covered in indigenous vegetation and is characterised by native coastal forest grading into a tidal estuary along the banks of Pourewa Creek.

Two gullies dominated by ponga-mamaku tree and fernland support watercourses approximately 350m long that empty into the upper estuarine reaches of the Pourewa Creek. The watercourses are of high quality and support indigenous fish species such as the banded kōkopu, shortfin eel and bullies.