

8. Management Units

8.1 Overview

The project area contains a number of reserves within the Pourewa Valley, including the Pourewa stream and its tributaries that require restoration work including pest plant control, pest animal control and planting. These reserves have been identified as management units (MU's) in Figure 26, with required weed and pest animal control and planting options outlined.



Figure 26:

Management Units

8.11 Purewa Cemetery (Management Unit 15)

The land parcel is cemetery land that adjoins the surrounding suburban area as well as directly adjoining the Tahapa East and Fancourt Reserves which are both Auckland Council Community Parks. There is a small area that is a Significant Ecological Area – Coastal Broadleaved Forest (WF4) in the northeast corner on the boundary to Tahapa East Reserve.

The reserve is made up of open space and regenerating forest consisting of indigenous and exotic vegetation types.

Most pest plant incursions are fewer than 50% of cover/biomass, and are discrete species with tree privet, monkey apple and agapanthus being the most common species.



Figure 48: Pest plant abundance (density % of biomass)

8.11.1 Pest Plant Species & Control Method

Common name	Threat	ID	Method (chem; non-chem)	Who
Agapanthus (<i>Agapanthus praecox</i>)	Sustained Control	8,9,10,14,20	FS H	Eco-Contractor Volunteer
Arum lily (<i>Zantedeschia aethiopica</i>)	Sustained Control	7,13,14	CP H	Volunteer Volunteer

Bangalow Palm (<i>Archontophoenix cunninghamiana</i>)	Sustained Control	2,22	CP; FS; DF H (seedlings); C; CM	Volunteer Volunteer (seedlings)/Eco- Contractor
Coral Tree (<i>Erythrina x sykesii</i>)		12,15	DF; R; CP C; CM	Eco-Contractor Eco-Contractor
Cotoneaster (<i>Cotoneaster glaucophyllus</i>)	Sustained Control	7	FS; CP;DF H	Eco-Contractor Volunteer
Ginger (<i>Hedychium gardnerianum</i> ; <i>H. flavescens</i>)	Sustained Control	21	CP H	Volunteer Volunteer
Jasmine (<i>Jasminum polyanthum</i>)	Sustained Control	11	CP;FS H	Eco-Contractor Volunteer
Monkey Apple (<i>Syzygium smithii</i> syn. <i>Acmena smithii</i>)	Sustained Control	8,9,10,11,20 21,22	CP; R; DF H (seedlings); C; CM	Volunteer Volunteer (seedlings)/Eco- Contractor (Trees)
Moth Plant (<i>Araujia sericifera</i>)	Sustained Control	16	CP; FS H	Eco-Contractor Volunteer
Phoenix Palm* (<i>Phoenix canariensis</i>)	Sustained Control	5	FS; CP; DF H (seedlings); C; CM	Eco-Contractor Eco-Contractor
Privet – Chinese (<i>Ligustrum sinensis</i>)	Sustained Control	21,22	CP; R; DF H (seedlings); C; CM	Volunteer Volunteer (seedlings)/Eco- Contractor (Trees)
Privet – Tree * (<i>Ligustrum lucidum</i>)	Sustained Control	1,2,10,12,13,1 4,15, 18,19 ,20, 22	CP; R; DF H (seedlings); C; CM	Volunteer Volunteer (seedlings)/Eco- Contractor (Trees)

Wandering willie (<i>Tradescantia</i>)	Sustained Control	15	FS H	Eco-Contractor Volunteer
Woolly Nightshade (<i>Solanum mauritianum</i>)	Sustained Control	13,16,21	CP; R H;C	Volunteer Volunteer

Method code: Cut & Paste (CP) Cut – non chemical (C) Ringbark (R) Foliar spray (FS) Drill & Fill (DF) Hand (H) Chip & Mulch (CM)

*Species where areas of incursion are one species only (ID numbers in bold)

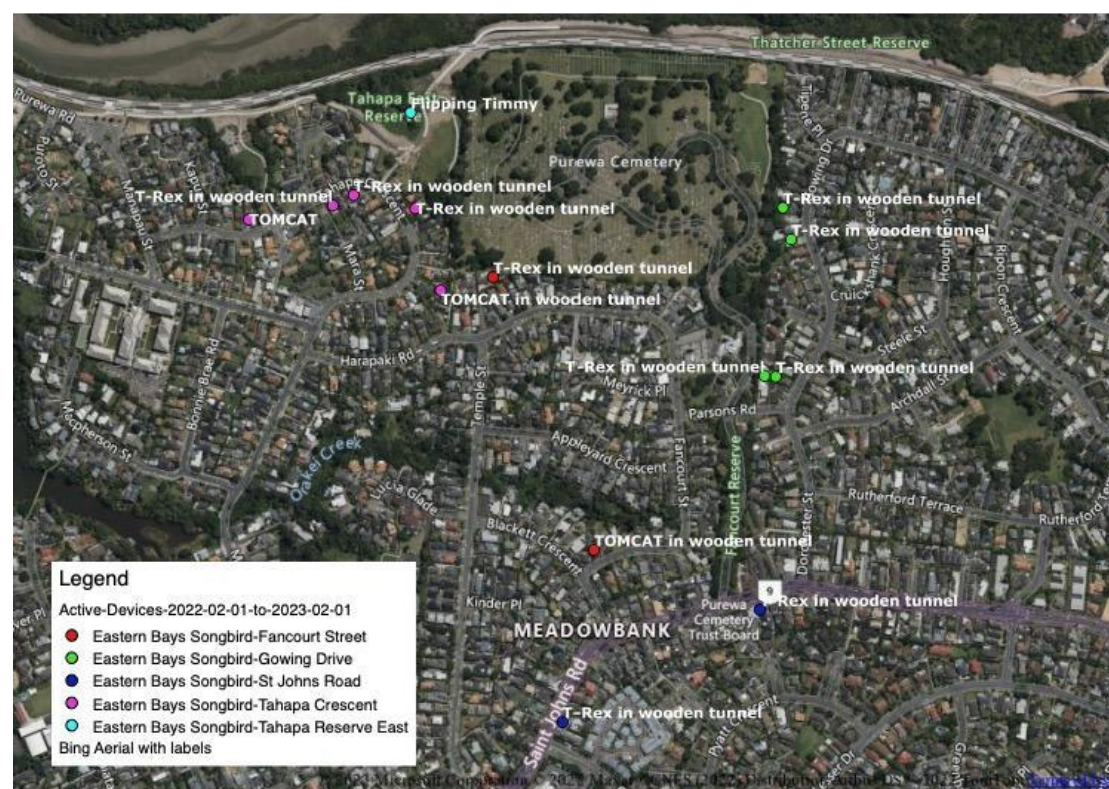


Figure 49: Pest animal control sites

8.11.2 Pest Animal Species & Control Method

Species	Method	Trap Type	Who
Rat	B	Bait Box	Eco-Contractor
Possum	T	Timms	Purewa Cemetery
Mice	B	Bait Box	Eco-Contractor

Wasp	S	Spray	Purewa Cemetery
------	---	-------	-----------------

Method code: Bait (B) Trap (T) types of trap Spray (S)

8.11.3 Volunteer Groups

- Eastern Bays Songbird Project