

## 8. Management Units

### 8.1 Overview

The project area contains a number of reserves within the Pourewa Valley, including the Pourewa stream and its tributaries that require restoration work including pest plant control, pest animal control and planting. These reserves have been identified as management units (MU's) in Figure 26, with required weed and pest animal control and planting options outlined.



**Figure 26:**

**Management Units**

## 8.12 Tahapa East Reserve (Management Unit 17)

The land parcel is an Auckland Council Community Park with a path network which provides access to surrounding suburban areas via Harapaki Road and Tahapa Crescent. The reserve is made up of open space and regenerating forest consisting of indigenous and exotic vegetation types.

There is a small area that is a Significant Ecological Area – Coastal Broadleaved Forest (WF4) in the northeast corner on the boundary to Purewa Cemetery. On the opposite side of the railway line and shared pathway, the lower reaches of the Pourewa stream are an area of frequent tidal inundation dominated by mangroves, with tree privet incursions in the canopy within the reserve further from the coast. There are also pest plant incursions including wandering willie.

Most pest plant incursions are fewer than 50% of cover/biomass, and are discrete species with tree privet being the most common species.

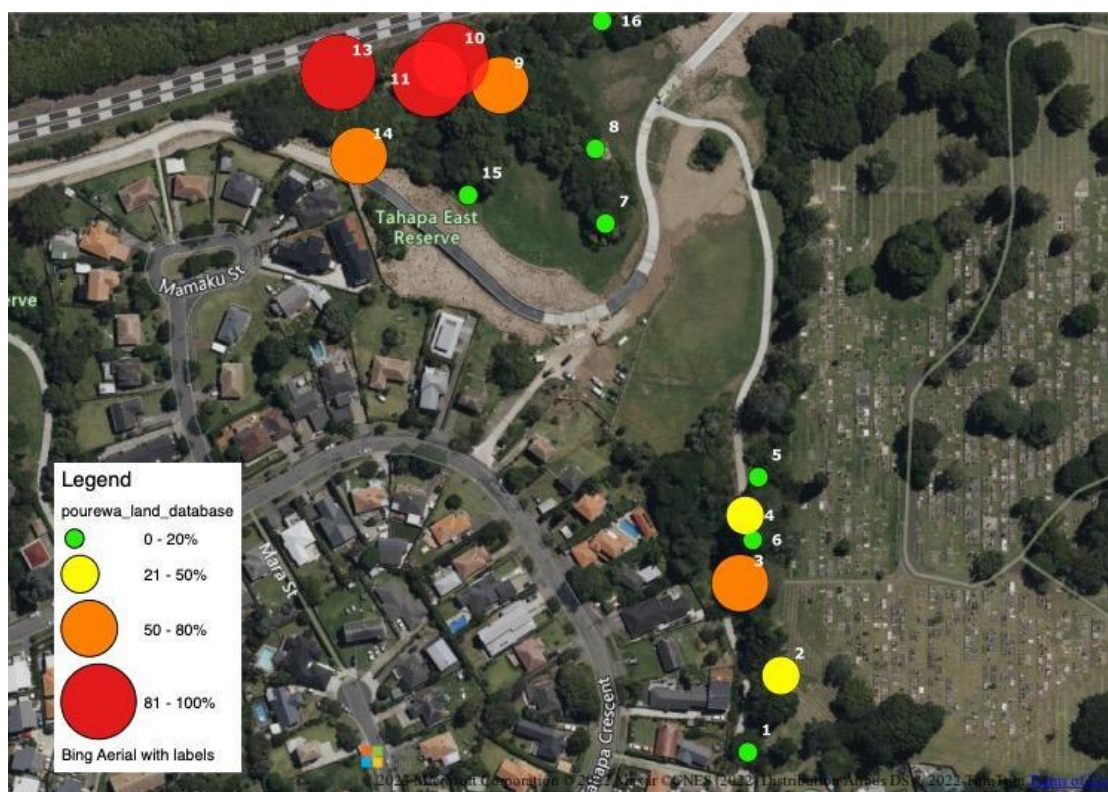


Figure 50: Pest plant abundance (density % of biomass)

### 8.12.1 Pest Plant Species & Control Method

Common name	Threat	ID	Method (chem; non-chem)	Who
<b>Arum lily</b> ( <i>Zantedeschia aethiopica</i> )	Sustained Control	3	CP H	Volunteer Volunteer

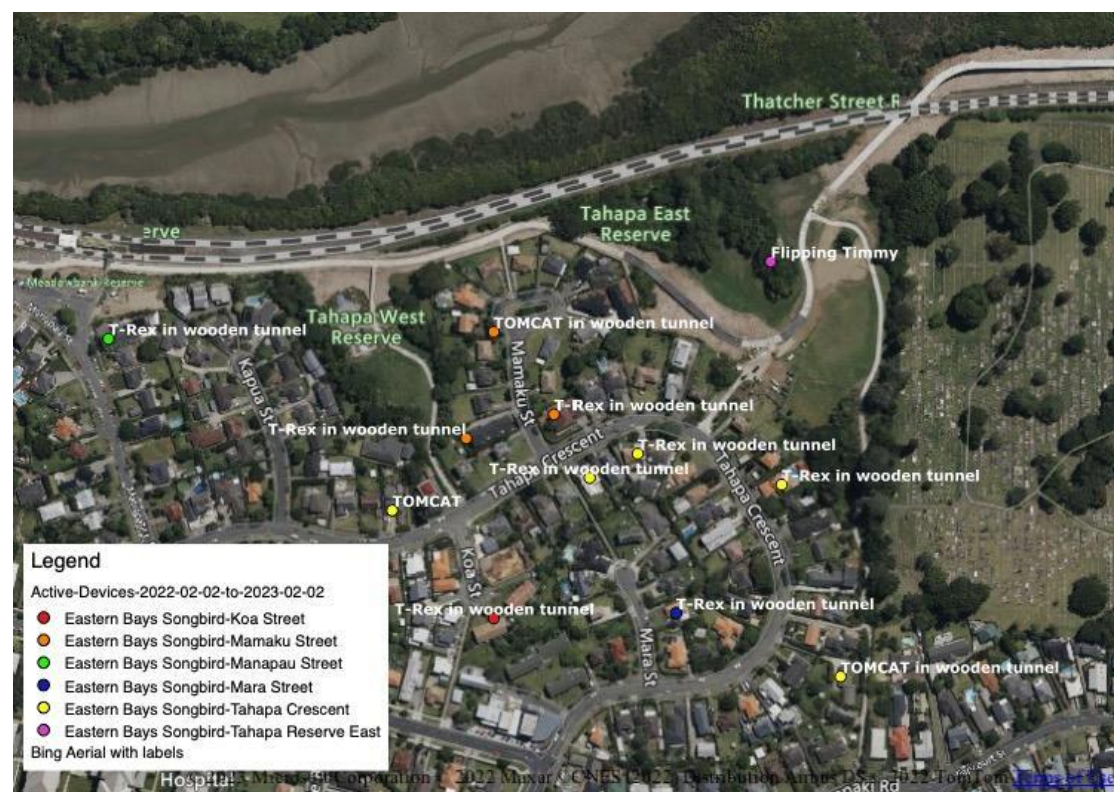


<b>Bamboo</b> ( <i>Phyllostachys species</i> )	Sustained Control	6	FS; CP H	Eco-Contractor Volunteer
<b>Black Wattle</b> ( <i>Acacia mearnsii</i> )	Not listed	8,14	CP; R; DF H (seedlings); C; CM	Volunteer Volunteer (seedlings)/Eco- Contractor (Trees)
<b>Cherry</b> ( <i>Prunus campanulata</i> )	Not listed	2	R; DF C; CM	Volunteer Eco-Contractor
<b>Climbing asparagus</b> ( <i>Asparagus scandens</i> )	Sustained Control	16	FS	Eco- Contractor
<b>English Ivy</b> ( <i>Hedera helix</i> )	Sustained Control	3,5	FS; CP H	Eco- Contractor Volunteer
<b>Ginger</b> ( <i>Hedychium gardnerianum</i> ; <i>H. flavescens</i> )	Sustained Control	2,3,13	CP H	Volunteer Volunteer
<b>Hawthorn</b> ( <i>Crataegus monogyna</i> )	Sustained Control	8	?	
<b>Moth Plant</b> ( <i>Araujia sericifera</i> )	Sustained Control	6	CP; FS H	Eco-Contractor Volunteer
<b>Phoenix Palm</b> ( <i>Phoenix canariensis</i> )	Sustained Control	11	FS; CP; DF H (seedlings); C; CM	Eco-Contractor Eco-Contractor
<b>Privet – Chinese</b> ( <i>Ligustrum sinensis</i> )	Sustained Control	13	CP; R; DF H (seedlings); C; CM	Volunteer Volunteer (seedlings)/Eco- Contractor (Trees)
<b>Privet – Tree *</b> ( <i>Ligustrum lucidum</i> )	Sustained Control	<b>1,4,7,8,9,10,11,13,14,15,16</b>	CP; R; DF H (seedlings); C; CM	Volunteer Volunteer (seedlings)/Eco- Contractor (Trees)

<b>Wandering willie</b> ( <i>Tradescantia</i> )	Sustained Control	2,4,13	FS H	Eco-Contractor Volunteer
<b>Willow</b> ( <i>Salix fragilis</i> )	Sustained Control	11,15	CP; DF C; CM	Eco-Contractor Eco-Contractor
<b>Woolly Nightshade</b> ( <i>Solanum mauritianum</i> )	Sustained Control	15	CP; R H;C	Volunteer Volunteer

**Method code: Cut & Paste (CP) Cut – non chemical (C) Ringbark (R) Foliar spray (FS) Drill & Fill (DF) Hand (H) Chip & Mulch (CM)**

**\*Species where areas of incursion are one species only (ID numbers in bold)**



**Figure 51: Pest animal control sites**

### 8.12.2 Pest Animal Species & Control Method

Species	Method	Trap Type	Who
Rat	T	T-rex in wooden Tunnel	Volunteer Residential Trapper
Possum	T	Flipping Timmy	Volunteer Eco- Contractor

Mice	T	T-rex in wooden Tunnel	Volunteer Residential Trapper
Wasp	S	Spray	Volunteer

---

**Method code: Bait (B) Trap (T) types of trap Spray (S)**

### 8.12.3 Volunteer Groups

- Eastern Bays Songbird Project