

8. Management Units

8.1 Overview

The project area contains a number of reserves within the Pourewa Valley, including the Pourewa stream and its tributaries that require restoration work including pest plant control, pest animal control and planting. These reserves have been identified as management units (MU's) in Figure 26, with required weed and pest animal control and planting options outlined.



Figure 26:

Management Units

8.5 Rutherford Reserve (Management Unit 6)

The land parcel is an Auckland Council Community Park with track network that provides access to the surrounding suburban area via entrances on Archdall Street and Rutherford Terrace.

The reserve is made up of open space and regenerating forest consisting of indigenous vegetation types typical of broadleaved scrub/forest. Canopy species include karo, māhoe, kānuka, karaka, and kohekohe.

Most pest plant incursions are fewer than 20% of cover/biomass, and are discrete species without any species dominating.

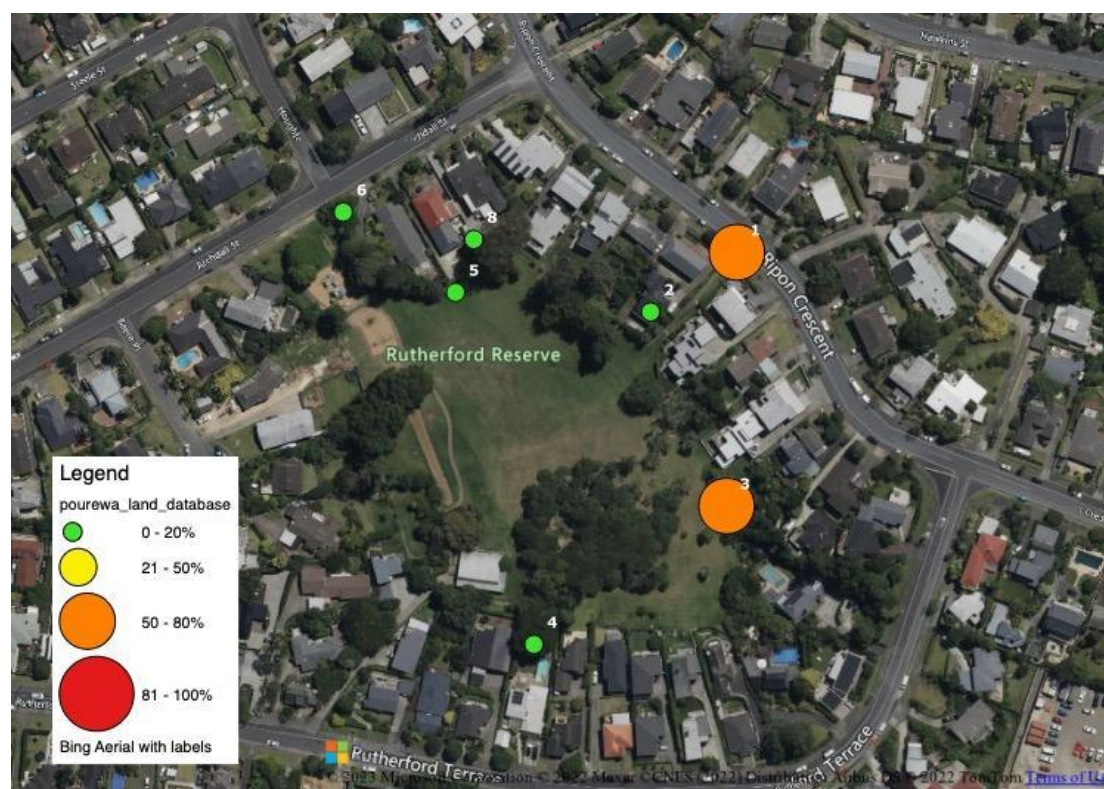


Figure 33: Pest plant abundance (density % of biomass)

8.5.1 Pest Plant Species & Control Method

Common name	Threat	ID	Method (chem; non-chem)	Who
Arum lily (<i>Zantedeschia aethiopica</i>)	Sustained Control	3,6,8	CP H	Volunteer Volunteer
Black Wattle (<i>Acacia mearnsii</i>)	Not listed	5	CP; R; DF H (seedlings); C; CM	Volunteer Volunteer (seedlings)/Eco- Contractor (Trees)

English Ivy (<i>Hedera helix</i>)	Sustained Control	3	FS; CP H	Eco- Contractor Volunteer
Ginger (<i>Hedychium gardnerianum</i> ; <i>H. flavescens</i>)	Sustained Control	3,4	CP H	Volunteer Volunteer
Gorse (<i>Ulex</i> spp.)	Sustained Control	4	CP; FS CM	Eco-Contractor Eco-Contractor
Jasmine (<i>Jasminum polyanthum</i>)	Sustained Control	8	CP;FS H	Eco-Contractor Volunteer
Moth Plant (<i>Araujia sericifera</i>)	Sustained Control	4,5	CP; FS H	Eco-Contractor Volunteer
Pampas (<i>Cortaderia jubata</i> and <i>C. selloana</i>)	Sustained Control	2,8	FS H	Eco-Contractor Eco-Contractor
Privet – Tree (<i>Ligustrum lucidum</i>)	Sustained Control	2,3,5,6	CP; R; DF H (seedlings); C; CM	Volunteer Volunteer (seedlings)/Eco- Contractor (Trees)
Wandering willie (<i>Tradescantia</i>)	Sustained Control	5	FS H	Eco-Contractor Volunteer
Woolly Nightshade (<i>Solanum mauritianum</i>)	Sustained Control	3,4,5,6	CP; R H;C	Volunteer Volunteer

Method code: Cut & Paste (CP) Cut – non chemical (C) Ringbark (R) Foliar spray (FS) Drill & Fill (DF) Hand (H) Chip & Mulch (CM)

***Species where areas of incursion are one species only (ID numbers in bold)**

8.5.2 Indicative planting schedule for forest canopy and understory

Common name	Species	Plant Grade	Spacing (m)



Figure 34: Pest animal control sites

8.5.3 Pest Animal Species & Control Method

Species	Method	Trap Type	Who
Rat	T	T-rex in Wooden Tunnel	Residential Trappers
Mice	T	T-rex in Wooden Tunnel	Residential Trappers
Wasp	S	Spray	-

Method code: Bait (B) Trap (T) types of trap Spray (S)

8.5.4 Volunteer Groups

- Eastern Bays Songbird Project