

8. Management Units

8.1 Overview

The project area contains a number of reserves within the Pourewa Valley, including the Pourewa stream and its tributaries that require restoration work including pest plant control, pest animal control and planting. These reserves have been identified as management units (MU's) in Figure 26, with required weed and pest animal control and planting options outlined.



Figure 26:

Management Units

8.7 Kepa Bush (Management Unit 9)

The land parcel is an Auckland Council Community Park with track network that provides access to the surrounding suburban area via entrances on Colenso Place, Kepa Road and Thatcher Street. It also provides access into adjacent land parcels into the Pourewa Valley, with tributaries to the Pourewa stream running through gullies to connect with the mid/lower parts of the Pourewa stream catchment and down to the coast. The Kepa Bush track network links to the track network following the course of the Pourewa Stream.

The forest area consists of remnant indigenous canopy trees; mainly pohutukawa, kanuka, and puriri which are dominant in the canopy with over 80% tree and shrub cover. A robust understory exists beneath these canopy species; however there are some discrete incursions of pest plants that are being managed as part of an Auckland Council Parks ecocontractor maintenance contract. Kepa Bush is a Significant Ecological Area (SEA) – Coastal Broadleaved Forest (WF4) terrestrial ecosystem. Kepa Bush Reserve is the largest remnant of indigenous forest on the Auckland Isthmus.

There are a number of pest plant incursions within the reserve as shown in figure 38. In addition, there are infestations of pest plants on adjoining private land (Thatcher Street). This includes a mix of Japanese honeysuckle, hawthorn, tree privet, woolley knightshade, pampas and moth plant and more concentrated incursions of single species including blue morning glory in the upper parts of the forest closer to where the forest adjoins Eastridge Mall and suburban properties on Colenso Place .

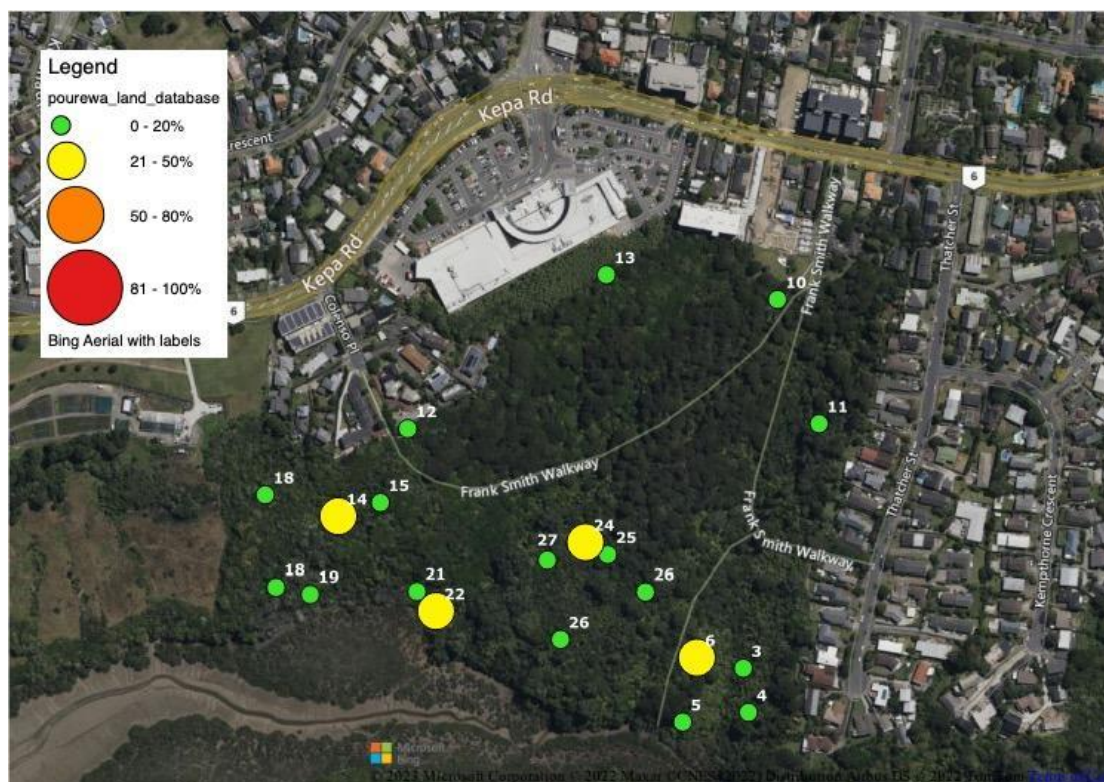


Figure 38: Pest plant abundance (density % of biomass)

8.7.1 Pest Plant Species & Control Method

Common name	Threat	ID	Method (chem; non-chem)	Who
Blue Morning Glory* (<i>Ipomoea indica</i>)	Sustained Control	12, 13	CP;FS H	Eco-Contractor Volunteer
Cherry (<i>Prunus campanulata</i>)	Not listed	27	R; DF C; CM	Volunteer Eco-Contractor
Climbing asparagus* (<i>Asparagus scandens</i>)	Sustained Control	5	FS	Eco- Contractor
Gorse (<i>Ulex</i> spp.)	Sustained Control	24,25	CP; FS CM	Eco-Contractor Eco-Contractor
Hawthorn (<i>Crataegus monogyna</i>)	Sustained Control	6,7,17,18,19	?	
Japanese Honeysuckle (<i>Lonicera japonica</i>)	Sustained Control	7,15,18,25,26	CP; FS H	Eco-Contractor Volunteer
Loquat (<i>Eryobotria japonica</i>)	Not Listed	5	CP;RB;FS;D F H	Eco-Contractor Volunteer
Madeira Vine (<i>Anredera cordifolia</i>)	Sustained Control	11	CP H	Eco-Contractor Volunteer
Moth Plant (<i>Araujia sericifera</i>)	Sustained Control	17,18,21	CP; FS H	Eco-Contractor Volunteer
Pampas (<i>Cortaderia jubata and C. selloana</i>)	Sustained Control	6,10,18,19	FS H	Eco-Contractor Eco-Contractor

Phoenix Palm (<i>Phoenix canariensis</i>)	Sustained Control	21,22	FS (seedlings); DF; CP H	Eco-Contractor Volunteer
Privet – Chinese (<i>Ligustrum sinensis</i>)	Sustained Control	7,8,15	CP; R; DF H (seedlings); C; CM	Volunteer Volunteer (seedlings)/Eco-Contractor (Trees)
Privet – Tree* (<i>Ligustrum lucidum</i>)	Sustained Control	4, 6,7,8,24,25 26;27	CP; R; DF H (seedlings); C; CM	Volunteer Volunteer (seedlings)/Eco-Contractor (Trees)
Woolly Nightshade (<i>Solanum mauritianum</i>)	Sustained Control	15,18,20,21,2 5	CP; R H;C	Volunteer Volunteer

Method code: Cut & Paste (CP) Cut – non chemical (C) Ringbark (R) Foliar spray (FS) Drill & Fill (DF) Hand (H) Chip & Mulch (CM)

***Species where areas of incursion are one species only (ID numbers in bold)**

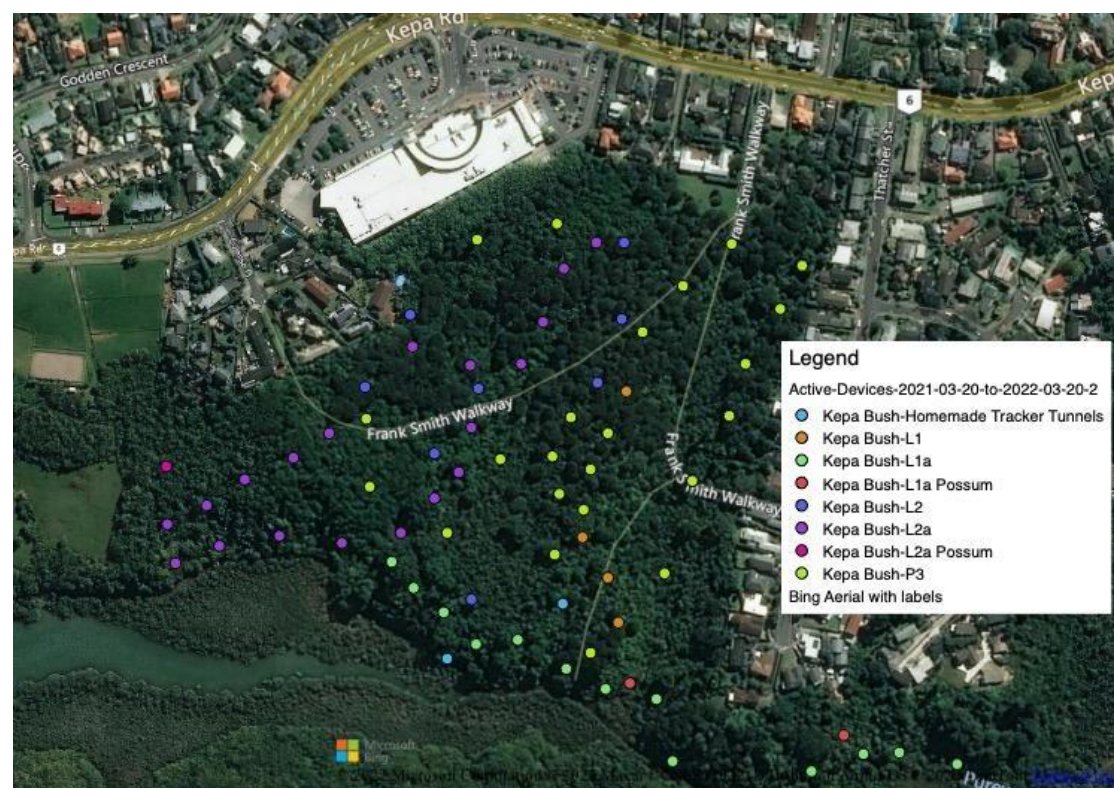


Figure 39: Pest animal control sites

8.7.2 Pest Animal Species & Control Method

Species	Method	Trap Type	Who
Rat	T	SnapE	Volunteer Eco- Contractor
Possum	T	Timms	Volunteer Eco- Contractor
Mice	T	SnapE	Volunteer Eco- Contractor
Hedgehog	T	SnapE Timms	Volunteer
Stoat	T	DOC200	Volunteer
Wasp	S	Spray	Volunteer Volunteer

Method code: Bait (B) Trap (T) types of trap Spray (S)

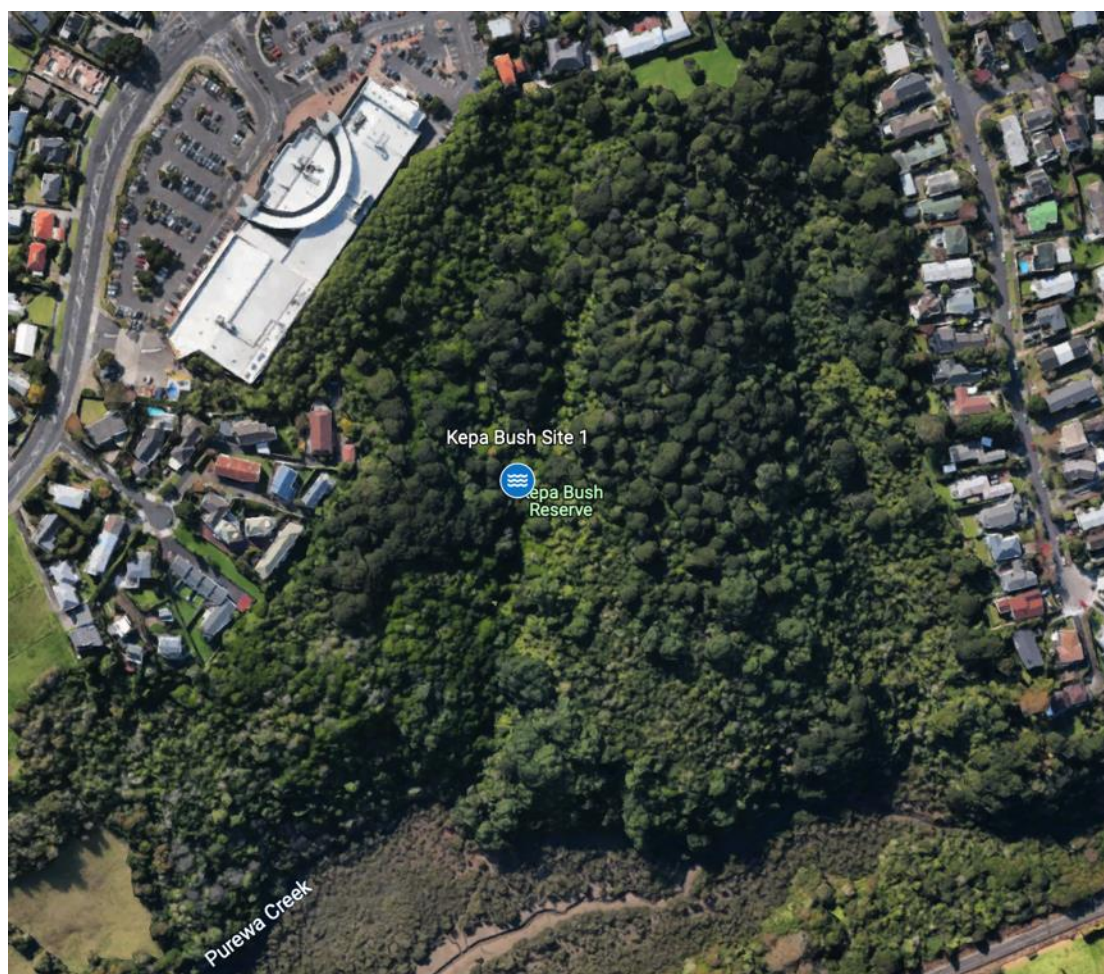


Figure 40: Water Quality Monitoring sites and In Stream values

8.7.3 Water Quality Results (Baseline)

Site	Temp	Clarity	Turbidity	PH	D.O	Nitrate	Nitrite	Phosphorous	Phosphate
Kepa Bush	18.8	56	9.3	6	9	2	0	0.05	0.153

8.7.4 Volunteer Groups

- Friends of Kepa Bush